

Port Security Manager

Even more securely connected:

Version 2.0 for dynamic network security by Network Access Control

Security in complex networking environments – flexible and highly available – without elaborate installation and instantly available as a Plug&Play solution?

The PortSecurityManager Version 2.0 provides a new level of corporate security:

More security with IEEE Standard 802.1x and VLAN-support through user authentication in flexible combination with MAC-Layer-2 port security for all non-802.1x-capable devices.

Virus scanners, VPN access and firewalls protect your network from external attack. The AUCONET PortSecurityManager counteracts internal fault sources. This network access control and management platform from AUCONET offers a complete solution for administrating corporate networks and focuses on comprehensive security mechanisms.

As a standard SNMP MIB-based system the PortSecurityManager is vendor-independent and has an extremely flexible design – it even provides full support for older devices. This saves expensive new purchases and the time required to set them up.

Finally. Peace.

Through regular communication with all switches on the network, including querying all connected devices, the PSM recognizes the intrusion of unauthorised users and devices. Using the existing database and integrated Radius support, detected users and devices are seen as authorised or not.

If an unauthorised access occurs or an unauthorised device is discovered, a corresponding alarm is triggered. At the highest level of security, the PortSecurityManager immediately deactivates the affected switch port or assigns it to a quarantine VLAN.

Until now protecting complex networks was time-consuming. The AUCONET PortSecurityManager now secures any kind of complex network rapidly without limiting resources. At the same time the administrative effort is reduced thanks to concise and easy operation by means of SPECTRUM and OneClick integration.

This gives you full control of the various levels of your infrastructure. With a click of the mouse you can, for example, map your complete corporate topology precisely or define individual protection rules for each department. In this way you see a transparent image of each level of network activities on our central alarm and event console.

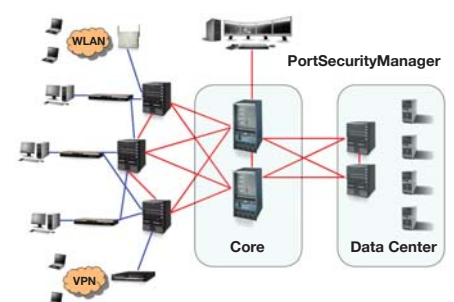
The PortSecurityManager is the central tool for security and monitoring because of its comprehensive administration options.

Overview of the key features:

- > central Network Access Control (NAC) instance with integrated Radius support for heterogeneous networking environments
- > supports IEEE 802.1x, MAC and PWA authentication
- > MAC (Layer 2)-based authentication for older devices via SNMP-MIBs
- > vendor independent VLAN- and policy-management
- > Alarm for unauthorised network access, with or without port-locking, policy- or VLAN assignment
- > Automatic inventory of all devices attached to the network
- > Resolution of user name, DNS, DHCP, MAC to IP-Address and IP-Address to network name
- > Topological, geographical and organisational depiction of the network structure
- > Access history for all network ports with comprehensive import and export of address- and statistical information
- > Detection of unused switch ports
- > Gateway to asset management
- > Simple operation and reduction of administrative effort by use of the OneClick console.

The option of supplying address- and user information in a complex network automatically is one of the strengths of the PortSecurityManager.

A single click produces a global port table or the access history for all connected network ports. The analysis of the connection history or detection of free ports gives useful information on the ideal utilization of the IT system.



Free point of view: Network Access Control

The PortSecurityManager represents the central platform for Network Access Control and management.

Policy-based authentication mechanisms facilitate differentiated control of all user network access privileges regardless of location.

By the possibility of seamless integration of assessment- and remediation services all connected devices and systems in the corporate network can be updated to the current security level.

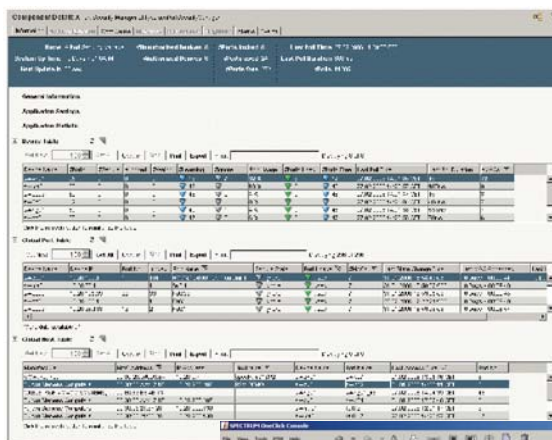
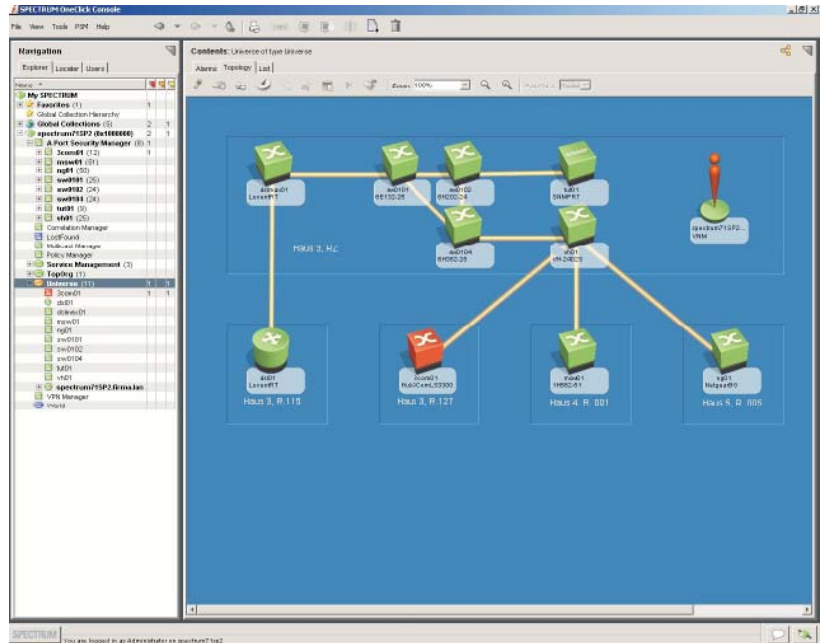
See and understand

No network and access management is complete without transparent reporting.

All of the PortSecurityManager's security relevant messages are visualised on the central alarm and event console.

The possibility of using data in other tools, comprehensive export and import functions, different table views and simple operation are natural features of the PortSecurityManager.

The form in which the PortSecurity-Manager displays its information can be freely defined: Whether topologically, geographically or organisationally – the desired depiction of the network structure is available with the push of a button.



Not simply a matter of taste:
The various analysis modes provide an efficient form of depiction that permits thoroughly appropriate, intuitive work in every respect.
The complete range of performance provided by the PortSecurityManager is rounded off by the ability to export and import all information.

